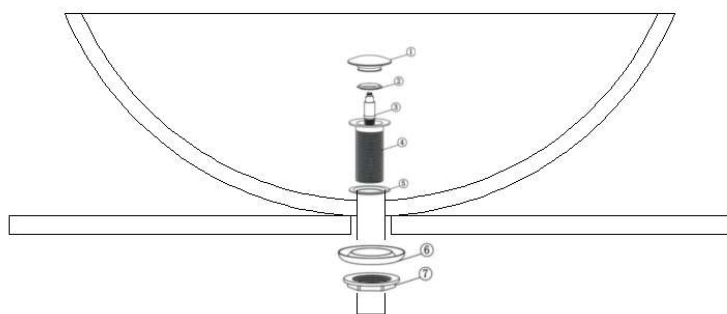


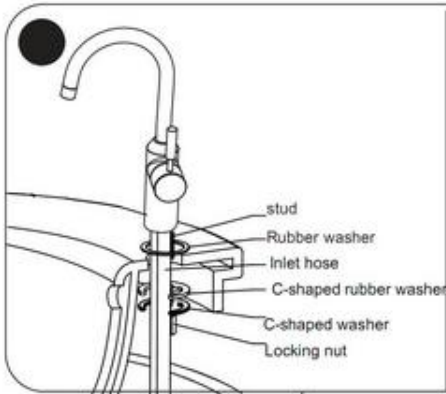
Installation Manual

Marble Drainage Piece

Thanks for choosing Lautus marble drainage piece. To assist you to install your basins easily, we provide you this installation manual to guide you through.

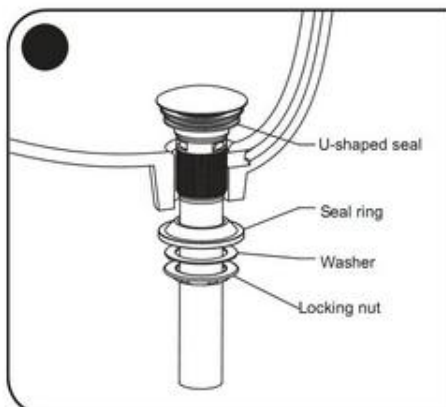
1. Remove the rubber ring (part 6) and the brass cap (part 7) nut from the drainage body.
2. Clean the basin. Cross the drainage body through the drain hole of the basin. Make sure the rubber ring on the drainage body fills the drain hole upper side very well.
3. Put on the rubber ring and the brass cap onto the drainage body under the vanity top. Tighten the brass cap with a wrench.





Faucet Installation

1. Place rubber washer under faucet body.
 2. Insert inlet hose, stud through mounting hole.
 3. Slide C-shaped rubber washer, C-shaped flat washer into stud, tighten the locking nut.
- (Notes: Don't overtighten the nut less the basin or faucet or their connection will be broken; the supplied rubber washer must be installed to prevent leakage.)



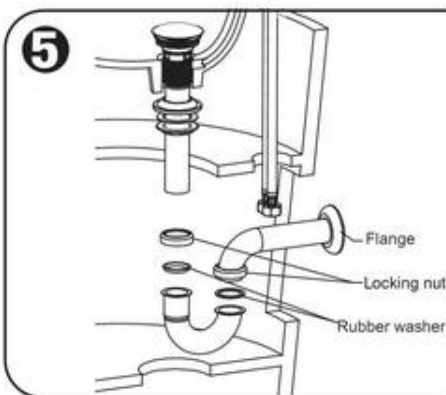
Pop -Up installation

1. Slide U-shaped seal onto pop-up body.
2. Insert pop-up body through basin, from below slide seal ring ,washer and locking nut.



Basin installation

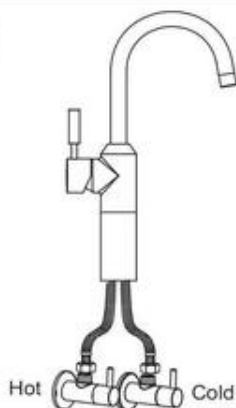
1. Align basin with cabinet, fit basin into cabinet. If basin wobble after installation, apply silicone sealant to the gap between basin and cabinet.



P-trap installation

1. Assemble two parts of the P-trap, slide flange onto the end of P-trap
 2. Slide locking nut and rubber washer onto drainage pipe of pop-up, then connect to P-trap, tighten locking nut to secure P-trap to Pop-up.
 3. Embed P-trap outlet into wall drainage hole, apply silicone sealant to prevent leakage, finally secure flange to the wall to cover the hole.
- (Note: Silicone sealant need 4 hours to harden.)

6



Supply pipe connection

1. Connect inlet hose to hot and cold supply valve. (Such valve not supplied)



Check for leakage

1. Turn on cold and hot supply valve, check if any leakage between inlet hose and supply valve. Turn on faucet and check if water runs smoothly.
2. Check if the pop-up stop / drain water properly; check if any leakage between pop-up and basin, or between pop-up and P-trap; or between P-trap and wall embedded drainage pipe.
3. Installation finished.

MAINTENANCE



1. Before install this bath cabinet, please read this installation instruction carefully. Operate properly according to the illustrated dimension, method and accessories kit.
2. Keep the bathroom clean and ventilative, avoid too much sunshine.
3. Keep bathroom tidy and keep inner cabinet dry.
4. Don't wash the cabinet directly with water, you might use semi-damped cloth to clean it.
5. Make sure the supply pipe and drainage pipe is secure and water-resistant without leakage, and check regularly to ensure cabinet in good condition.
6. Please apply wax to hardware handle, towel bar or bracket regularly.
7. Keep away from heat source above 60°C. Don't scratch or hit the product.
8. If the granolithic counter occur scratch, use #800 abrasive paper or abrasive cloth wetted with water to remove the scratch.
9. Never apply any other chemical liquid to wipe this product.
10. Cabinet door and drawer might have slight displacement due to transportation vibration and wobble, which might cause block for drawer or door operation, if so just use screw driver adjust the rail or hinge according to the drawer assembly instruction.